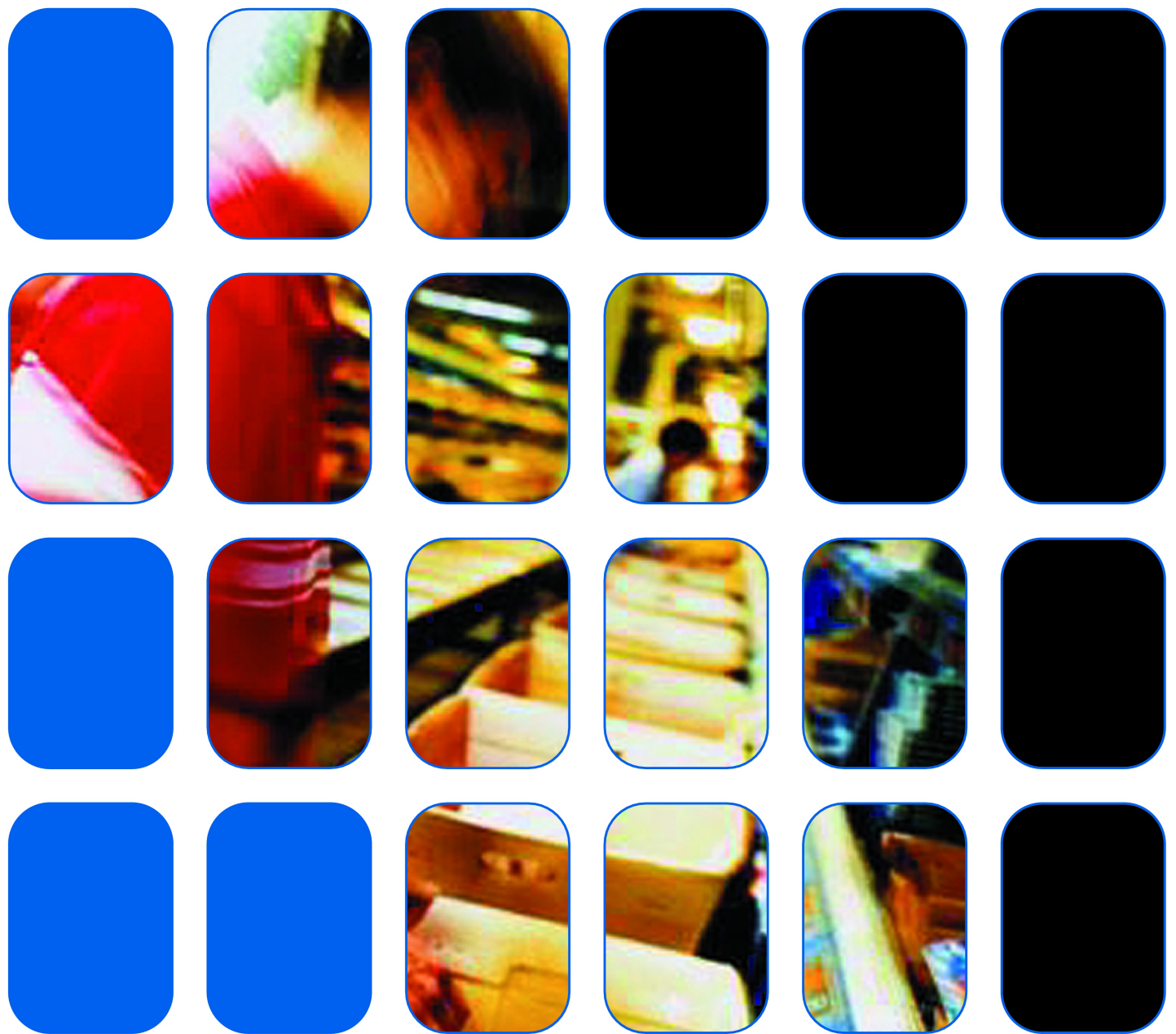


Stock Control And Production Management



Product Overview

Stockit

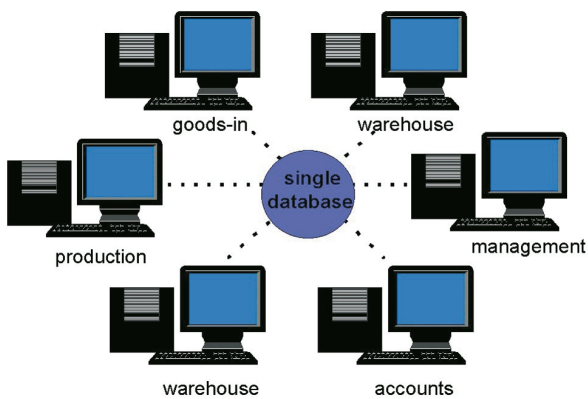
Is stock management becoming a headache?
- let Stockit put you back in control!

Stockit

Stockit is a powerful, yet simple to understand stock management and planning software tool designed to greatly ease the task of inventory control and production kitting. No more endless visual checking, remembering to get quotations, or reordering parts. Instead, you have a fully integrated stock control and parts listing program with the ability to automatically determine inventory shortages and generate the necessary quotation requests and purchase orders. Designed for ease of use, Stockit can be learned in just a few hours.

Either single, or multi-seat configurations

Stockit is designed with a single, central database. Your network may be expanded to include many departments both on-site and possibly at remote locations that all require access to the stock database.

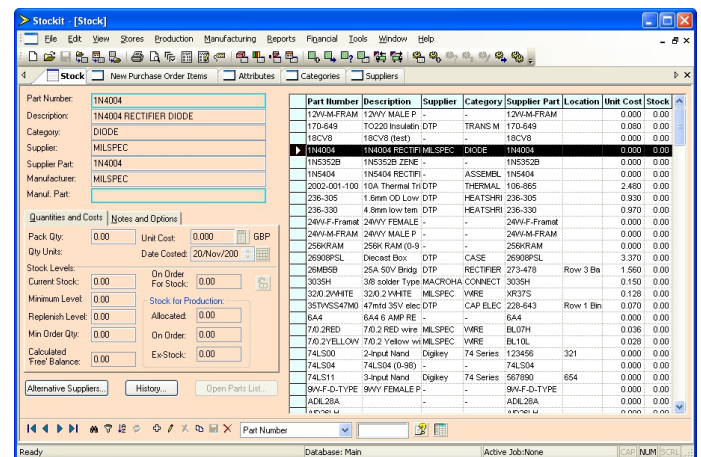


Stockit can be a single seat or multi-seat installation all accessing a single database located on one PC in the network. This ensures the data being accessed is always accurate and up-to-date.

Certain users and departments may be allowed to modify and revise data, others may be restricted to 'view only' or be allowed only limited authority to modify and revise. It's all under your complete control.

Relational Database

With Stockit, all your stock records are held in a single industry standard relational database engine. This relational database means there is a link to the assemblies and products that the parts are used in, together with full details of the suppliers from whom you obtained them. By maintaining an up-to-date cost for each part Stockit makes it easy to determine product manufacturing costs and order values.



Stockit gives you control of parts

Each part can have three distinct Part Numbers allocated for you, your supplier and the original manufacturer of the part. Any number of alternate suppliers can be specified for each part, and adding new parts is simplicity itself.

Instant access to parts data

Parts information can be sorted and searched by Part Number, Supplier, Order Code, Location & Category. Information for each part also includes price, minimum and restocking levels, quantity allocated, quantity scheduled, quantity for non-production, units of measure and notes field. All orders can be stored indefinitely on the system and traced back to their original orders if necessary.

Fast parts list generation with Stockit

Parts lists can be generated very quickly using a 'Pick from Stock' table which gives access to your entire database and allows sorting and searching any field. Having entered the parts lists you have the option of adding an associated product to stock. Parts lists can be used in a 'Mix of Products' where shortages, quotes, and orders can be automatically generated.

Stockit creates orders automatically

All orders include order ref, supplier, order date, date due, delivery and invoice address, cost, and whether each item is for production, non-production or schedule. Products not manufactured in house can also be processed. All outstanding orders can be viewed together with expected delivery dates.

Minimum stock levels updated automatically

Items with a minimum stock level can be replenished at any time without having to go through the 'kitting' process. Production, Non-production, and Scheduled orders can be received via a 'Goods-In' option. Pick lists and Assembly lists can be generated.

Stockit

Stockit helps you build entire projects

When you've built a product you can stock it, sell it, or use it just like any other component in another product - level after level after level. Creating the product is easy as well. All your parts are held in one database, and cross indexed by type, part number, location, supplier, manufacturer, etc. You can copy parts lists, modify them, add 'time' as a costed item, specify alternate parts, and use fractional lengths, volumes etc. The parts lists even have issue numbers.

Stockit gives you the peace of mind that comes with control

“ Stockit was designed from the ground-up to be easy to use and can be picked-up with a few hours of practice then gradually merged with an existing manual system until you are ready for it to take over completely. ”

Stockit Valuation

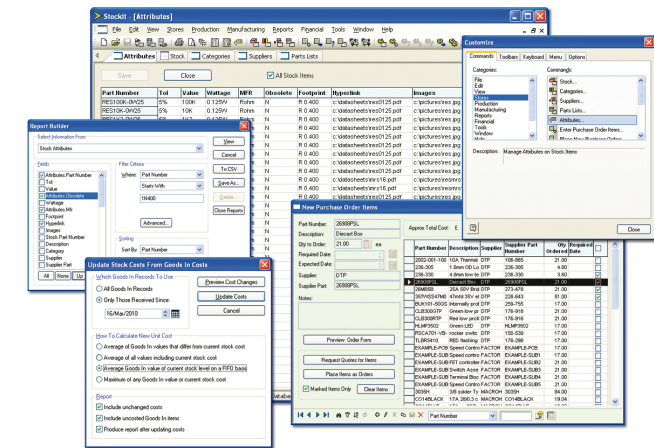
The value of parts held in stock can be shown instantly. Stockit will provide you with a valuation of all parts and products in stock, together with the value of all kits, shortages, outstanding orders and total stock. Component costs are tracked by order, so the reported stock value reflects the real cost, not an arbitrary average. Plus, there is full reporting of the status of each batch as it goes through production. There is even a history of what you made last week, last month or last year. How far back you go into the archives is up to you.

Uses standard stationery

Plain paper is all that's needed to print your requests for quotation, orders or reports. You can of course set-up the printing to take account of pre-printed company stationery.

Interfaces with accountancy systems

Stockit imports parts-lists, stock, suppliers, categories in CSV (comma separated values) format supported by Excel and a number of accountancy products such as SAGE and Quickbooks. Stockit can also export data in CSV and RTF format.



Full trial kitting

Stockit will check your stock and generate a comprehensive list of shortages. You can choose alternative parts, and print quotation requests or orders - automatically. You use your own order number style, starting at the order number you want, and the program will automatically increment from order to order. Stockit keeps track of your kits, but no stock records are changed until you're ready to build the product. Then it will generate stores picking lists for any quantity of product, and corresponding assembly lists for production right down to the location of each component.

Unplanned issues

Stockit is flexible enough to allow for part issues that do not form part of a production kit, and to add extra parts to the automatically generated orders to cover stock shortages. Development and Production groups can use the same stock control system. When the order comes in you don't need to look up your part numbers - simply enter the supplier's part numbers from the delivery note. Stockit will link these automatically to your own internal part numbers and update the stock records correctly.

Partial deliveries

Stockit will happily accept partial deliveries, and will even let you release partial kits to avoid holding up production. Full visibility on the status of orders and production jobs is provided, allowing you to easily track the progress of orders and jobs through the system.

Stockit lets you place and accept scheduled orders, and you can also specify minimum order levels to ensure that you always maintain a buffer stock for emergencies.

Parts List: EXAMPLE-PCB Created: 10-Mar-2017 Revision: 1 Cost: 21.53 Date Costed: 17-Nov-2017				Notes:			
Part Number	Description	Quantity	Cost				
WRS16 1K	400mW 1% Metal Film Resistor	1.00	0.021				
WRS16 100K	400mW 1% Metal Film Resistor	1.00	0.021				
MTN1	10k linear potentiometer pot	1.00	0.470				
WRS16 3K3	3K3 250mW metal film resistor 1%	1.00	0.021				
WRS16 1K	400mW 1% Metal Film Resistor	1.00	0.021				
WRS16 680	400mW 1% resistor 680	1.00	0.021				
WRS16 1K	400mW 1% Metal Film Resistor	1.00	0.021				
WRS16 3K6	400mW 1% Metal Film Resistor	1.00	0.021				
WRS16 1K	400mW 1% Metal Film Resistor	1.00	0.021				
WRS16 220R	400mW 1% Metal Film Resistor	1.00	0.021				
WRS16 1K	400mW 1% Metal Film Resistor	1.00	0.021				
UA78540	switch Mode PSU Controller IC	1.00	1.021				
ZTX450	PNP Transistor	1.00	0.200				
35WVS47M0611	47mfd 35V electrolytic	1.00	0.070				
CK18U	WRS2 0.01mfd 10% 63V capacitor	1.00	0.136				
CC1X	WRS2 0.1mfd 10% 63V capacitor	1.00	0.136				
35WVS47M0611	47mfd 35V electrolytic	1.00	0.070				
35WVS47M0611	47mfd 35V electrolytic	1.00	0.070				
Ph 2145	1mm single sided PCB P/N	10.00	0.130				
DCS-SA0006-PCB	Bare PCB for DCS01 speed controller	1.00	4.000				
BUILD	Assembly Time	30.00	7.500				

On Order				
Production	£	5.008		A
Non Production	£	0.228		B
Total On Order	£	5.234		C=A+B

Stock				
In Hand	£	1652.777		D
Allocated to Production	£	211.025		E
Total Stock	£	1863.802		F=D+E

Work In Progress				
Total Stock Currently In Production	£	783.357		G
Product Value When Complete	£	26.904		H

Net Stock Valuation				J=F+G-H
	£	2647.159		

Part Number	Unit Cost	In Stock	Value
170-649	0.080	0.00	0.000
2002-001-100	2.480	5.00	12.400
236-305	0.930	1.91	1.776
236-330	0.970	1.93	1.872
2090RPSL	3.370	5.00	16.850
20M55B	1.560	17.00	26.520
3035H	0.150	20.00	3.000
320.2WHITE	0.128	5.20	0.666
35WVS47M0611	0.070	51.00	3.570
710.2RED	0.036	14.38	0.517
710.2YELLOW	0.028	5.57	0.156
BUILD	0.250	0.00	0.000
BUK101-50GS	2.900	17.00	49.300
CLB300RTP	0.220	5.00	1.100
CLB300RTP	0.220	5.00	1.100
CO14BLACK	0.350	19.04	6.664
CO14BLUE	0.350	15.30	5.355
CO14BROWN	0.350	13.60	4.760
CO14RED	0.350	4.12	1.442
CK21X	0.136	17.00	2.312
DCS-SA0006-PCB	4.000	28.00	112.000
EXAMPLE-PCB	21.534	16.00	344.544
EXAMPLE-PRODUCT	79.337	10.00	1031.381
EXAMPLE-SUB1	3.433	4.00	13.734
EXAMPLE-SUB2	4.516	4.00	18.063

Stockit produces a range of reports and can interface with outside systems such as Excel Spreadsheets and the SAGE accountancy systems

Feature Summary:

- Windows-based application
- Standard Windows editing throughout
- Configurable user interface
- User defined shortcut keys
- All data contained in industry-standard relational database
- Full 'referential integrity' of cross-references within the database
- Full multi-user networking with user names and passwords
- Integral backup and restore
- Point and click creation of multi-level part lists
- Control of display and order of fields in forms
- 'Find' and 'Filter' tools to aid item location
- Display and printout of product structure
- 'Where used' feature for parts usage
- Fractional quantities with user-defined precision
- User defined currency and precision (decimal places)
- User definable item units
- User defined fields on stock items
- Print requests for quotations and orders
- Produce Production and Non-production orders
- Produce Scheduled orders
- Partial ordering available for accurate scheduling
- Bills of Materials (BOM) and Stores picking lists
- Show outstanding orders
- Print bin labels
- Produce customisable reports using Report Builder
- Reports include 'filters' allowing selective reporting
- Goods-in option via order number
- Accept partial and over-deliveries
- Automatically replenish minimum stock levels
- Select a 'mix of products' for production and allocate stock
- Re-use previous production jobs as template for new ones
- Automatically determines shortages for mix of products
- Trial kitting allows 'what if' analysis
- Track work in progress
- Store orders and assembly lists for future reference
- Product items fully traceable back to originating orders (ISO audit)
- Auto fulfilment of production shortfalls from non-production orders
- Create product costings (including labour costs)
- General Assembly lists (includes 'fit at' information)
- Undo stock allocation and return to 'shelf'
- Release individual products from job to production
- Import complete databases from Stockit (DOS) and StockWin
- Import parts lists, stock, suppliers and categories in CSV format
- Export parts lists, stock, suppliers and categories in CSV format
- Context sensitive on-line help
- Paper and electronic Users Guide including tutorial

System Requirements

- Pentium Processor
- Windows 8 and 10 supported
- 1024x768 Min Graphics resolution
- 100Mb hard disk space for program files
- Network ability to share files (optional)

For information on pricing contact:

WestDev Ltd

20 Miller Court, Severn Drive,
Tewkesbury, Glos. GL20 8DN
United Kingdom

Tel: +44 (0)1684 296 501

Email: sales@stockitsoftware.com

Further information on all
products and prices available at:

www.stockitsoftware.com